

WIRE COVER for S6-GC(25-60)K-US

Solis Three Phase Grid-Tied Inverters

Key Features

- Designed for simple and easy mounting on the wall or mounting plate.
- Covers PV wires from tampering.
- Stainless steel design for long life and operation under extreme conditions.
- Designed for direct 1.5" conduit connection.
- Covered under 2 years warranty.



Models:

S6-GC25K-US / S6-GC33K-US

S6-GC36K-US / S6-GC40K-US

S6-GC50K-US / S6-GC60K-US

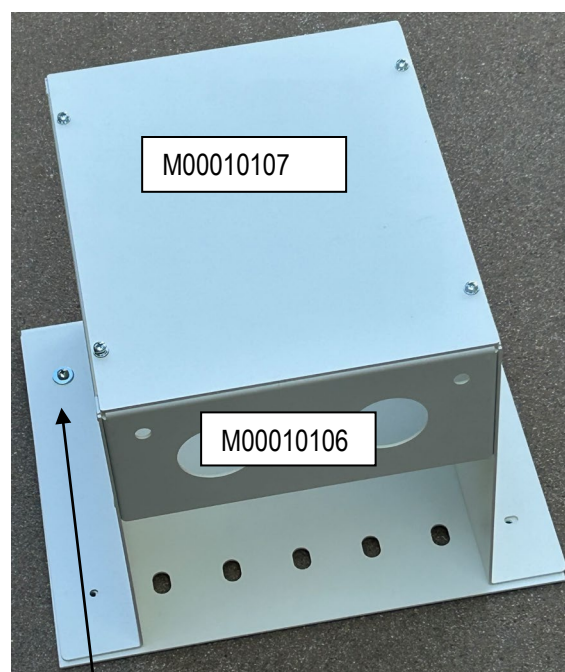
S6-GC30K-LV-US

WIRE COVER FOR S6-GC(25-60)K-US

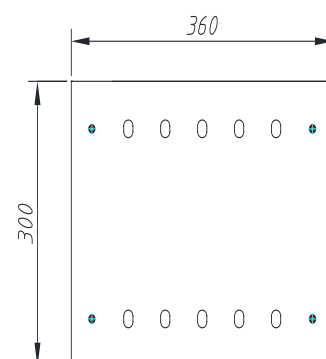
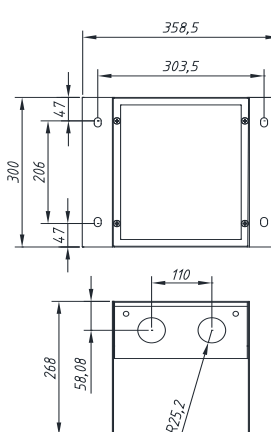
Model	S6-GC(25-60)K-US-WIRE COVER
General Data	
Dimensions (W*H*D)	14.1 x 11.8 x 10.55 in (358.5 x 300 x 268 mm)
Weight	10 lbs. (4.5 kg)
Material	Stainless Steel (SS)
Paint Color	RAL9016
Order Part Number	GCI.25K05.70.000 (Includes M00010106 and M00010107) GCI.25K05.40.000 (Includes M00010106, M00010107 and M00010108)
Warranty	2 years



8-32 Steel Pan Head Screws with Spring Lock Washer



Optional: 1/4-20 Steel Pan Head Screws with Spring Lock Washer



Optional: Post Mounting Plate